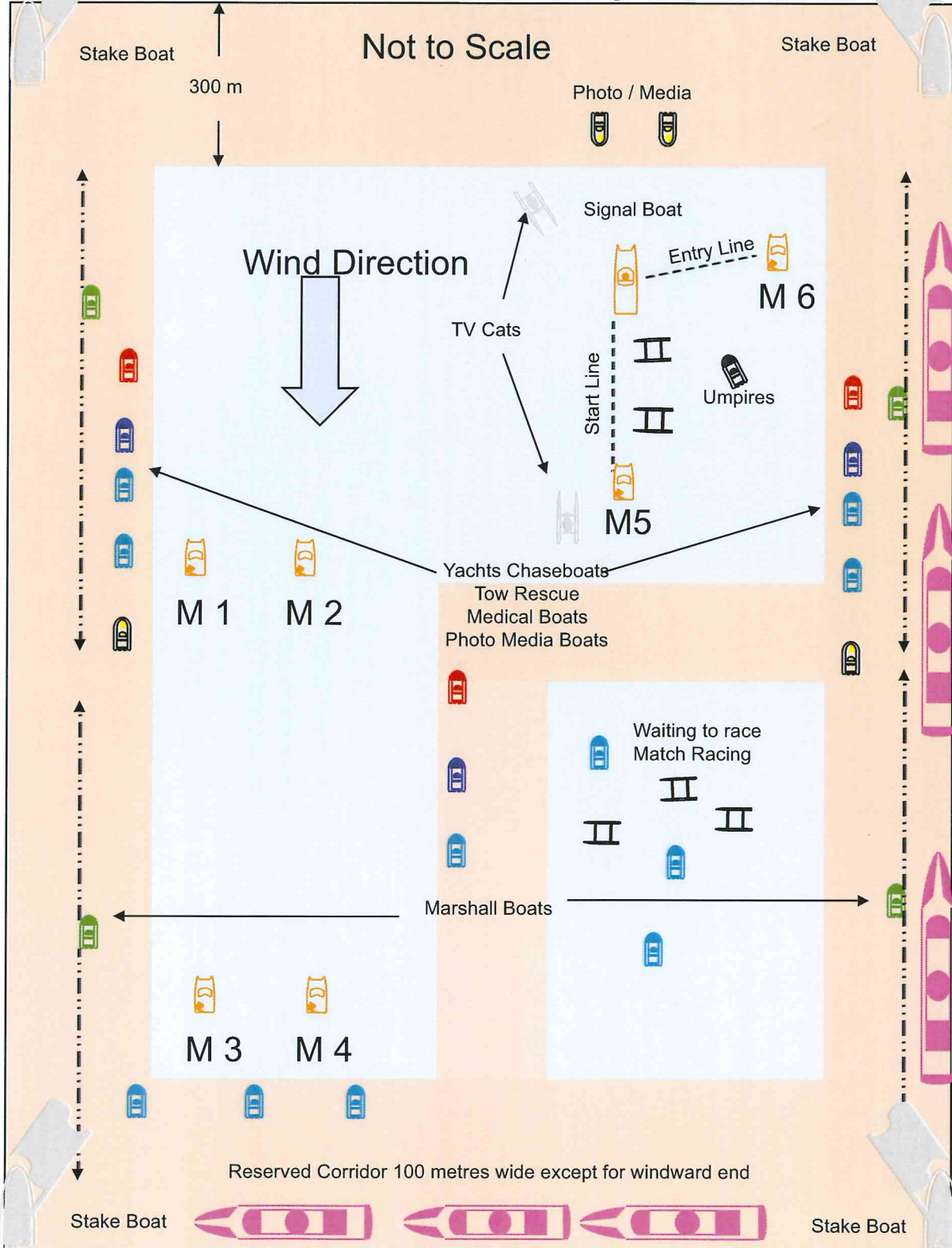


RACE MANAGEMENT  
**AMERICA'S**  
**CUP**

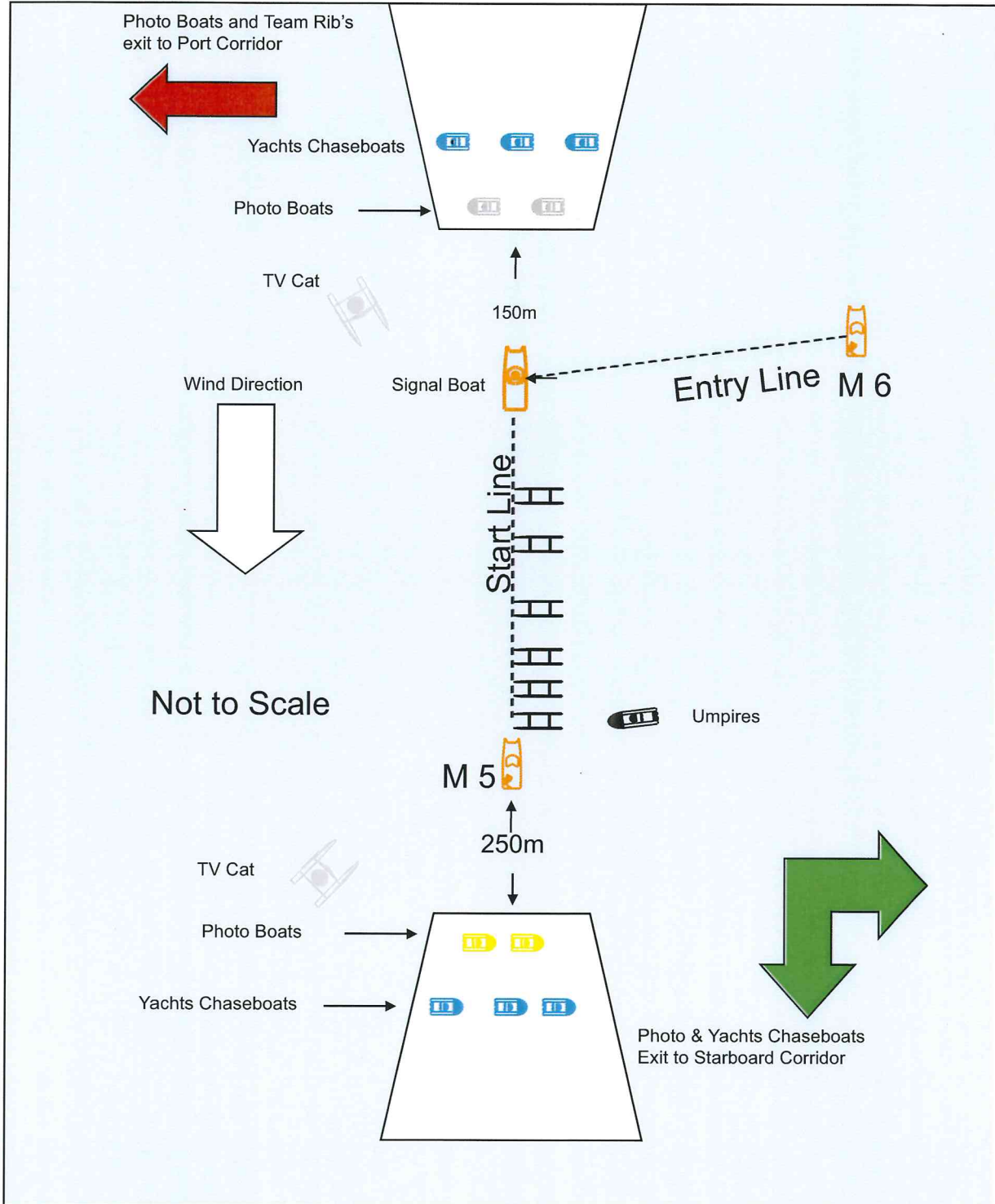
Public Area No Large Boats



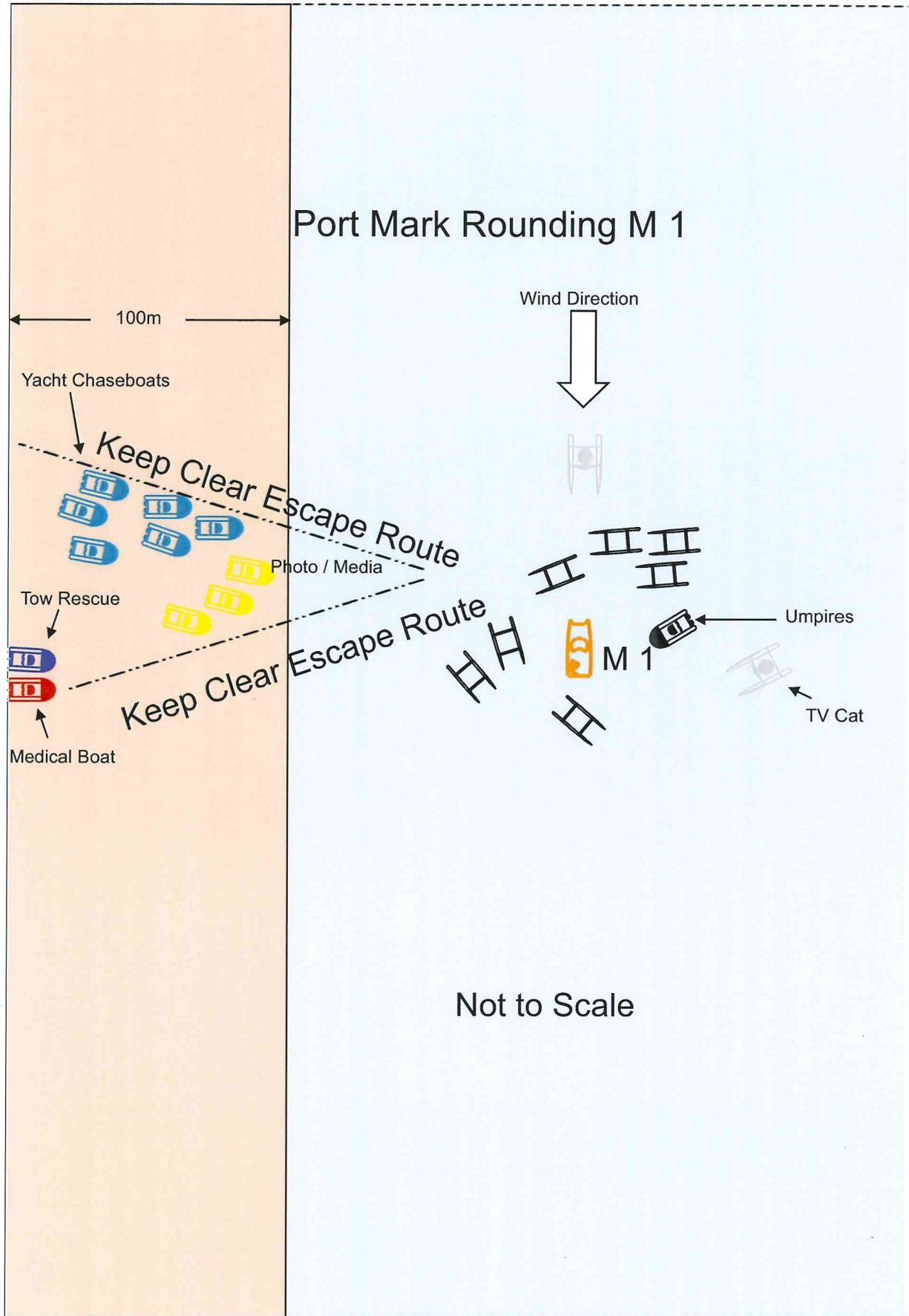
Public Area is White

RACE MANAGEMENT  
**AMERICA'S**  
**CUP**

Reaching Start  
Port Rounding M 2

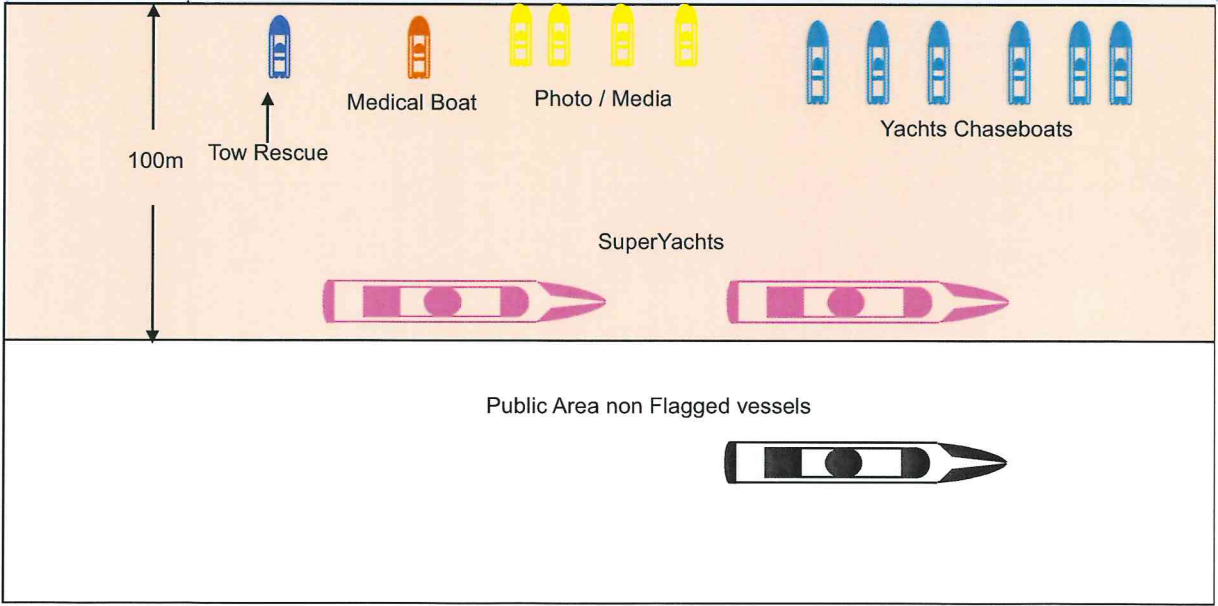
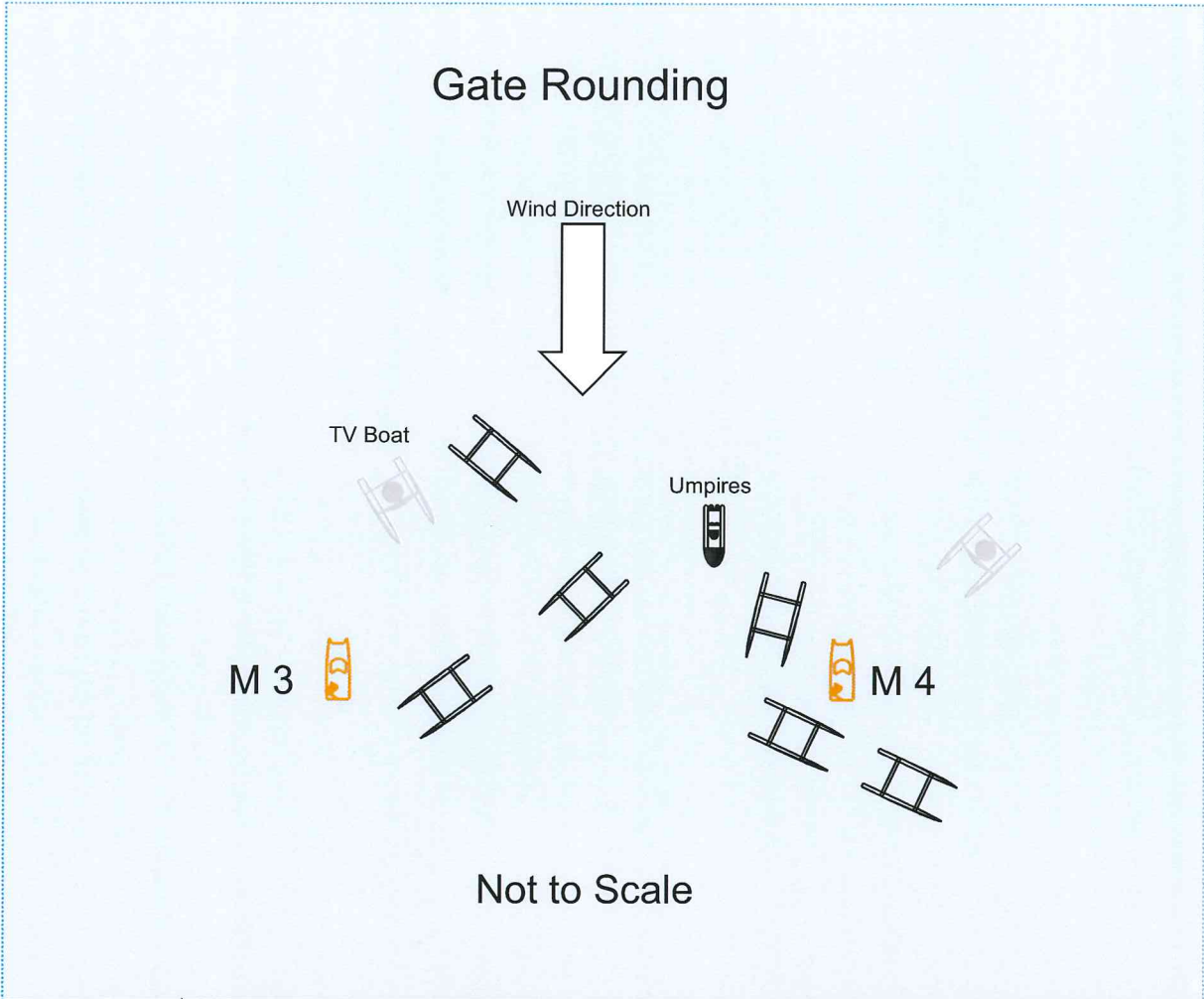


RACE MANAGEMENT  
**AMERICA'S**  
CUP



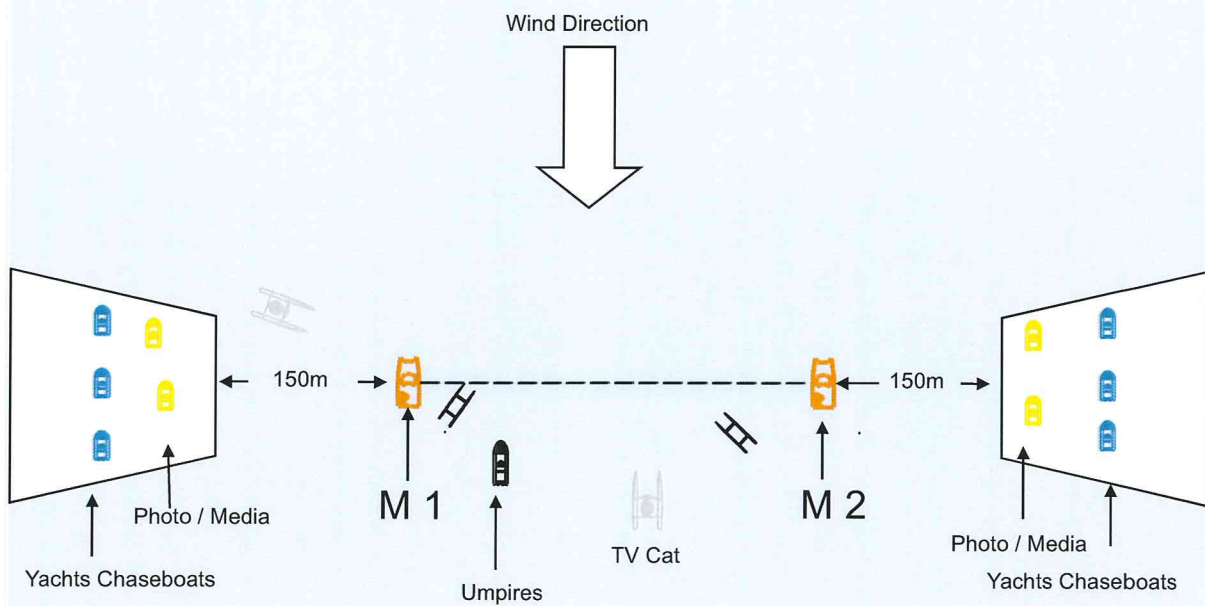
RACE MANAGEMENT  
**AMERICA'S**  
CUP

### Gate Rounding



RACE MANAGEMENT  
**AMERICA'S**  
CUP

Upwind Finish at  
Windward Gate



Not to Scale